

# PROXIMA

Your continuous flow analyzer,  
compact and economical



Environment



Food



Oenology



Milk & dairy products



AUTOMATED ANALYTICAL SOLUTIONS FOR ENVIRONMENTAL & FOOD INDUSTRIES

# → Proxima

A very economical package  
with high analytical performances

Based on widely used Futura technology, the latest instrument in our product range has been designed to offer the most effective solution at the most attractive price. It has been designed to reduce the cost of analysis without decreasing performance.



- Up to 5 parameters in the same module
- Two optimized 26 positions pumps (2 x 13)
  - Micro flow capacity (reduce your reagents consumption and minimize your hazardous waste)
  - Modularity (change your manifold to extend the number of parameters)
  - Compact (75 cm x 50 cm including reagents bottles)
  - High Throughput (up to 500 tests/hour)

## SIMPLICITY AND SECURITY

With the Proxima, SFA technology is no longer reserved for the highly trained technician. Setup is easy, and operation is simple. The system will analyze between one (1) and five (5) analytes simultaneously at the detection limits defined by the method. The two, 26 position pumps (52 tubes in total) are operated by the software. Options like automatic startup, automatic shutdown, and leak detection enable longer walk-away times and simplify your analysis even further.

For user safety, the reagent drawer located below the instrument, allows one to store all your reagents "inside" the instrument and will reduce the risks due to handling of hazardous reagents and also save space required by the system.

## HIGH ANALYTICAL THROUGHPUT

The Proxima will allow you to run all of your analysis at the optimum throughput. With its reduce reagents consumption (micro or macro-flow), and its high sensitivity detector (digital colorimeter with 24 bit A/D converter) the Proxima will give you consistent results even when working at very low detection limits.

### Fast analytical manifold change over

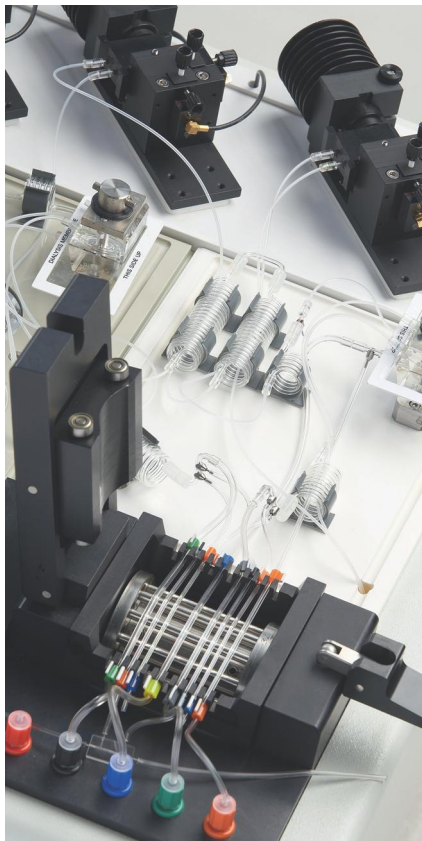
Using the Proxima will also allow you to use the unique rapid "Alliance System" to measure other parameters with the same instrument. In less than 5 minutes, you can replace a manifold (simply disconnect the tubes and pull away the complete plate with the pump tube holder). To eliminate the opportunity for mistakes, each manifold is supplied with its own pump tube holder.

### Up to 500 results per hour

When the instrument is ready to run, just load your sampler and place your reagents in the drawer. The instrument will run your analysis at a speed from 20 to 100 analyses per channel (according to the method).

In a five channels configuration, you will be able to run up to 500 results per hour.





## PRACTICAL AND AUTOMATIC

The Proxima has been designed to automate the most complex colorimetric methods and your toughest sample matrices (phenol, cyanides, TN, TP...).

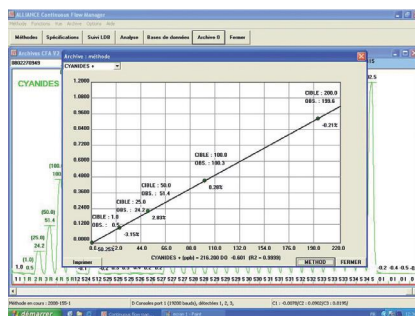
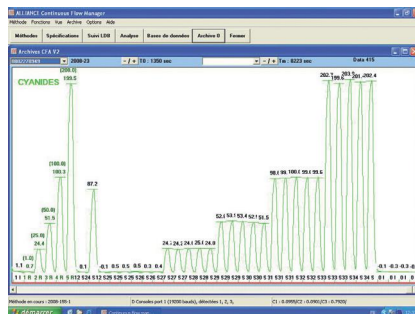
On the Proxima you will be able to use all types of sample preparation (dialysis, in-line distillation, heating-bath, liquid-liquid extraction, autoclave, UV digestion...) to reduce time and cost of analysis according to local or international standards (ISO, EPA,...).

In addition, with the XYZ sampler (360 positions) and optional dilutor, you will be able to use the dilutor to automatically dilute out of range samples or standards solutions.



## DEDICATED ANALYTICAL SOFTWARE

The Proxima software is designed to simplify your daily operation. Fully compatible with all types of LIMS, it will automatically operate your instrument according to your methods requirement. The software will automatically control the instrument, do all the data treatment and (if required) print all information at the end of the run (calibration curve, graphics, analysis report, QC chart...). The new 32 bit software version is a perfect fit for the analyzer and its accessories.

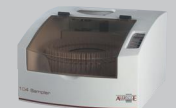


## COMPLIANCE WITH REFERENCE METHODS

- Compliant to ISO, EPA, AFNOR, COFRAC...
- Fully compatible with the former Technicon® system methods
- ISO 9001:2000 Compliant
- GLP compliant and compatible with your Laboratory Information Management System

## AVAILABLE ACCESSORIES AND MODULES TO IMPROVE PRODUCTIVITY

- **Autosampler 30**  
Maximum capacity of 30 samples.
- **Autosampler CS9000**  
XYZ  
Maximum 100 samples.
- **Autosampler 104**  
Maximum capacity 104 samples.
- **Autosampler XYZ**  
Maximum capacity 360 samples.



- **Dilutor**  
Automatic preparation of standard solutions and automatic dilution of off scale samples.



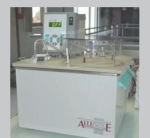
- **UV digestion**  
In-line digestion.



- **Distillation module**  
Simple or double in-line distillation.



- **Autoclave**  
In-line digestion.



- **Flame photometer**



- **Fluorometer**



- **Full auto module**  
Automatic handling of external modules and accessories.



- **Enzymatic kits**  
A full range of specific reagents.



# → Proxima

## Technical specifications

<b>Principle</b>	Wet chemistry automation using segmented flow	
<b>Operation</b>	Multi parametric batches in parallel	
<b>Samples</b>	Analytical rate	From 15 to 120 samples an hour
	Special analytical rates	Please inquire specifically
	Samples loading capacity	104 cups on the FUTURA auto-sampler 360 cups on the XYZ auto-sampler
	Dual probe	Optional
	Sample volumes	From 0.5 ml to 100 ml
	Identification	Alphanumeric/ Bar Code optional
	<b>Reagent drawer</b>	Removable drawer with control window
	Loading capacity	Up to 5 different reagents
	Containers	From 200 ml to 1000 ml
	Leak retention volume made of chemically inert plastic material	
<b>Pump</b>	Number of pump tubes	Maximum of 26 per pump (total 52 tubes)
	Automatic valve	Optional
	Auxiliary valve	Optional
	Leak detector	Optional
	Automatic shut down	Optional
	Automatic start up	Optional
	Variable speed	Optional
	Flow rates	From 50 to 3000 µl / minute
<b>Measurement</b>		
<b>Analytical manifold</b>	Injection, Dilution, Mixing, Incubation, Distillation, Dialysis, UV Digestion, Extraction liquid / liquid	
<b>Colorimeter</b>	Standard spectral range	190 - 1100 nm
	Type	Monochromatic or dichromatic
	Analog / Digital Converter Resolution	24 bits (16.8 million points)
	Optical path	From 5 to 50 mm
	Flow cell volume	From 1 to 150 µl
	Linearity	From 0 to 2.5 absorbance units
	Debubbling	Mechanical, electronic under software control or hardware bubble detection
	<b>Other detectors</b>	UV / Vis, Flame photometer, Fluorometer, electrodes, and more... let us help develop a method that is specifically designed to meet your analytical needs
<b>Dimensions</b>	75 x 50 x 42 cm (L x W x H)	
<b>Weight</b>	45 kg	

AUTHORIZED DEALER

**ALLIANCE**  
INSTRUMENTS  
an AMS Company Brand

AMS France

10, avenue Charles de Gaulle - 95740 FREPILLON - France  
Tel. : +33 (0)1 34 18 71 10 - Fax : +33 (0)1 39 60 72 39  
Email : [dialog@alliance-instruments.com](mailto:dialog@alliance-instruments.com)  
[www.alliance-instruments.com](http://www.alliance-instruments.com)

